



Instructions

M.A.S.S. SPARE TIRE PLATFORM MINI (STP MINI)

Thank you for purchasing the M.A.S.S. Spare Tire Platform Mini from AAL! We greatly appreciate your trust in our company. We take that purchase and your commitment to us very seriously. If you have any questions along the way, please don't hesitate to give us a call at 385.202.4188.

****Please read these instructions thoroughly before starting this project.****

****If you purchased the camber kit, please proceed to page 13 for instructions ****

Tools Required:

There is more than one tool for every job, but below is the list of tools we use for this installation.

- 1/4" or 3/8" Drive Ratchet
- 4mm Allen Socket or Wrench
- 10mm Socket or Wrench

What's Included:

Spare Tire Platform Mini Parts:

Platform	1	Short Guard Edge	2
Vertical Mounting Bracket	2	Tire Alignment Sacer	4
End Cap	2	Left Plate Lock	1
Long Guard Edge	2	Right Plate Lock	1
		Right Rotating Bracket	1

Spare Tire Platform Camber Kit Parts:

Driver Pivot Bracket	1	Rear Driver Pivot Bracket	2
Passenger Pivot Bracket	2	Rear Passenger Pivot Bracket	2
Brace	1	Front Pivot Bracket	1

Spare Tire Platform Mini Hardware:

M6x14mm Button Head Bolts	34
M6 Nylon Insert Nuts	42
M6x10mm Button Head Flange	8

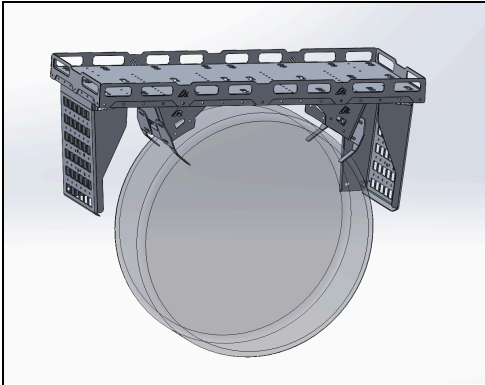
Spare Tire Platform Camber Kit Hardware:

M6x14mm Button Head Bolts	8
M6 Nylon Insert Nuts	12
M6x10mm Button Head Flange	4

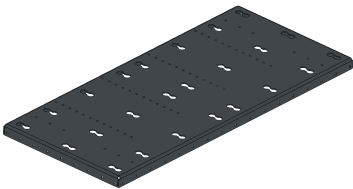
Part Overview and Prep

Part Overview and Prep First lets review images of all the necessary parts and hardware to ensure we have everything we need for the installation process

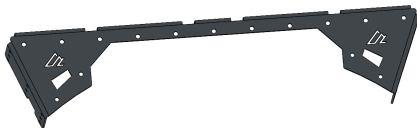
STP Mini Parts:



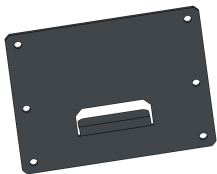
Platform:



Vertical Mounting Bracket:



End Cap:



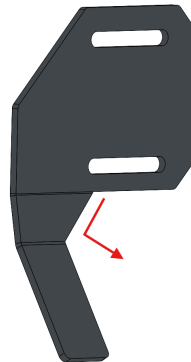
Long Guard Edge:



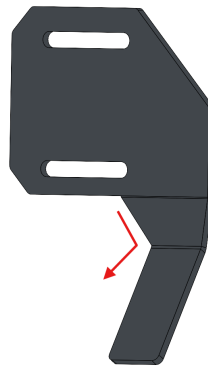
Short Guard Edge:



Left Plate Lock (Left Flange upwards):



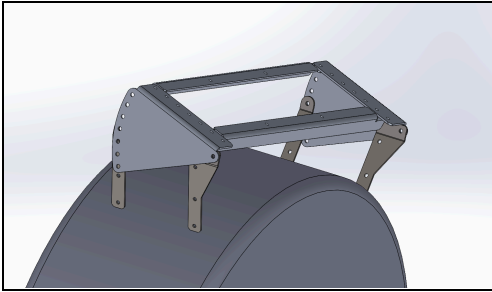
Right Plate Lock (Right Flange upwards):



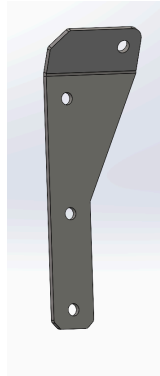
Right Rotating Bracket:



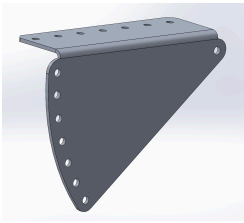
Camber Kit Parts:



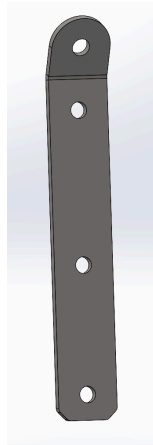
Rear Passenger Pivot Bracket:



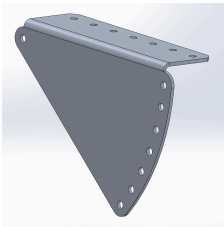
Driver Pivot Bracket:



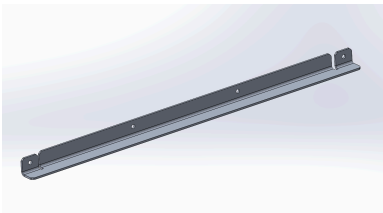
Front Passenger Pivot Bracket:



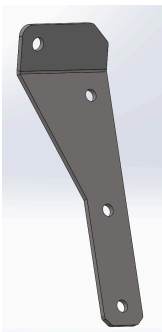
Passenger Pivot Bracket:



Brace:

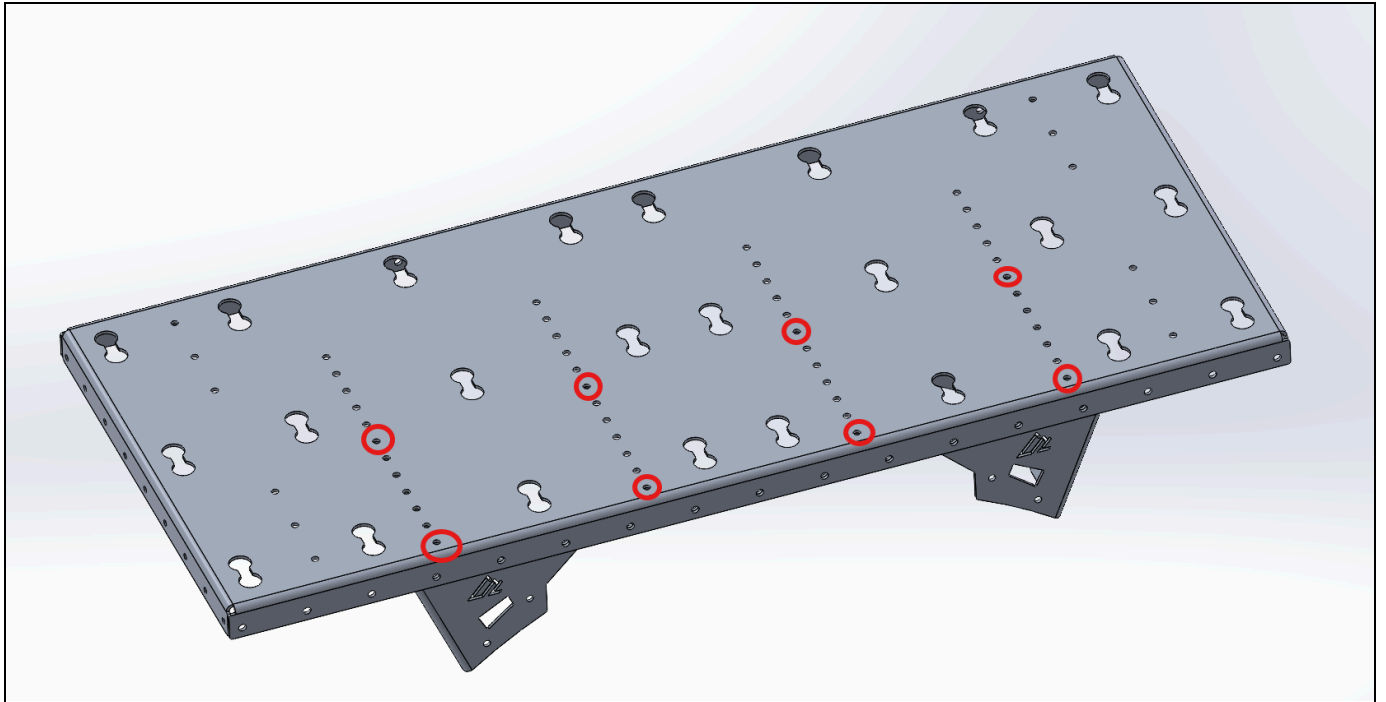


Rear Driver Pivot Bracket:

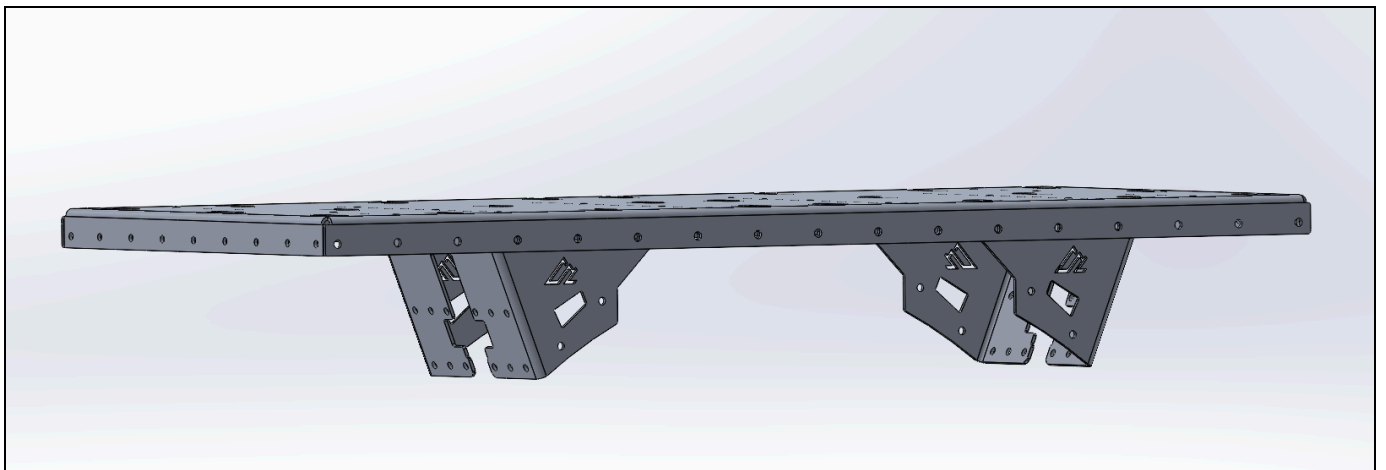


Step 1: Install Vertical Brackets

Install both **Vertical Mounting Brackets** with the flanges on the vertical brackets positioned to the inside as pictured below. **Loosely** attach the vertical brackets to the main platform with **(4) 6x14mm bolts** and **(4) M6 Nylon Nuts** per bracket. The flanges on the main platform should be positioned downward. Note that the spacing and position of the vertical brackets can be adjusted to fit different tire widths as several 4 hole lines are provided, the orientation below however will suffice for most cases.

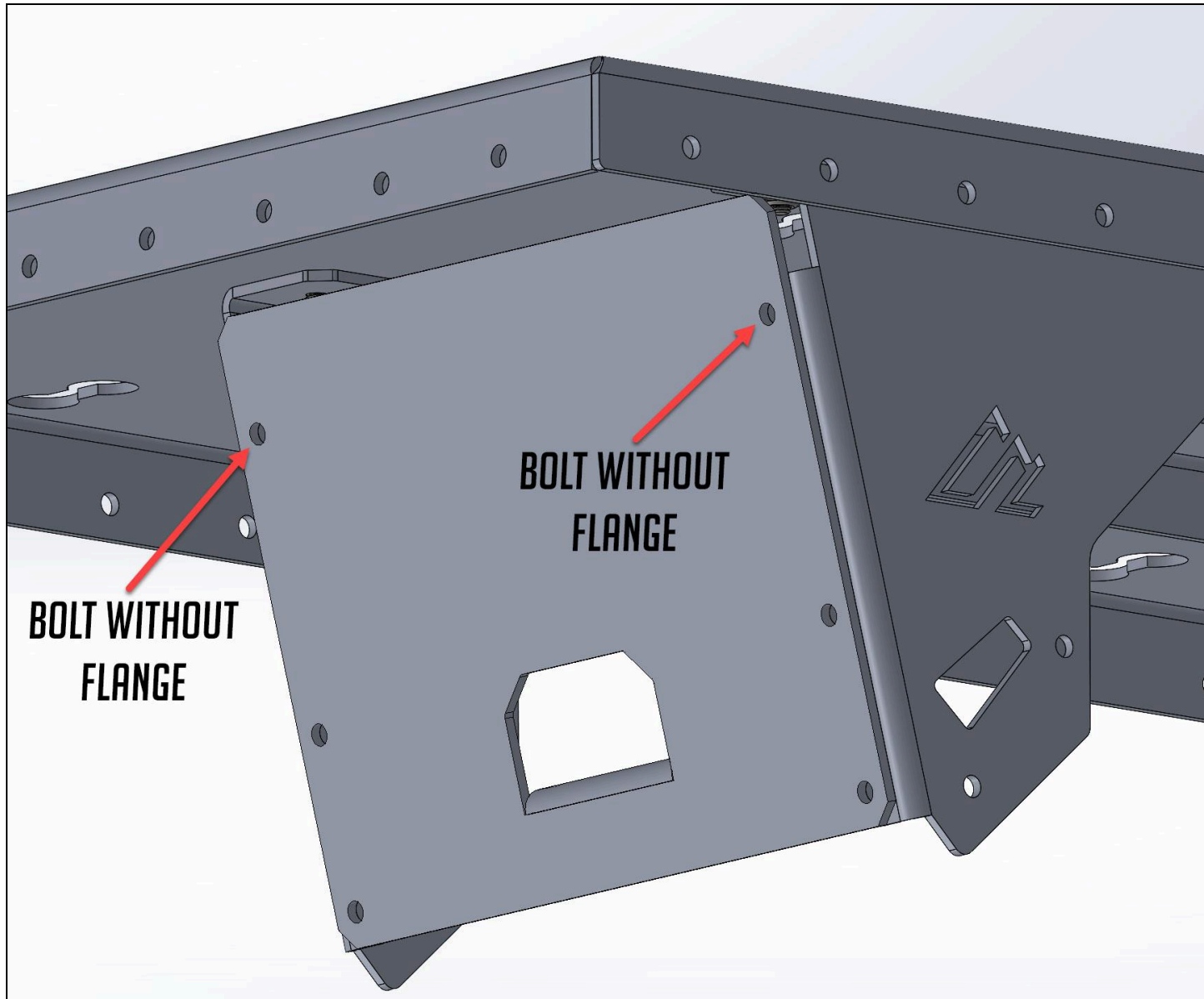


After both vertical brackets are loosely installed, here's what it should look like.

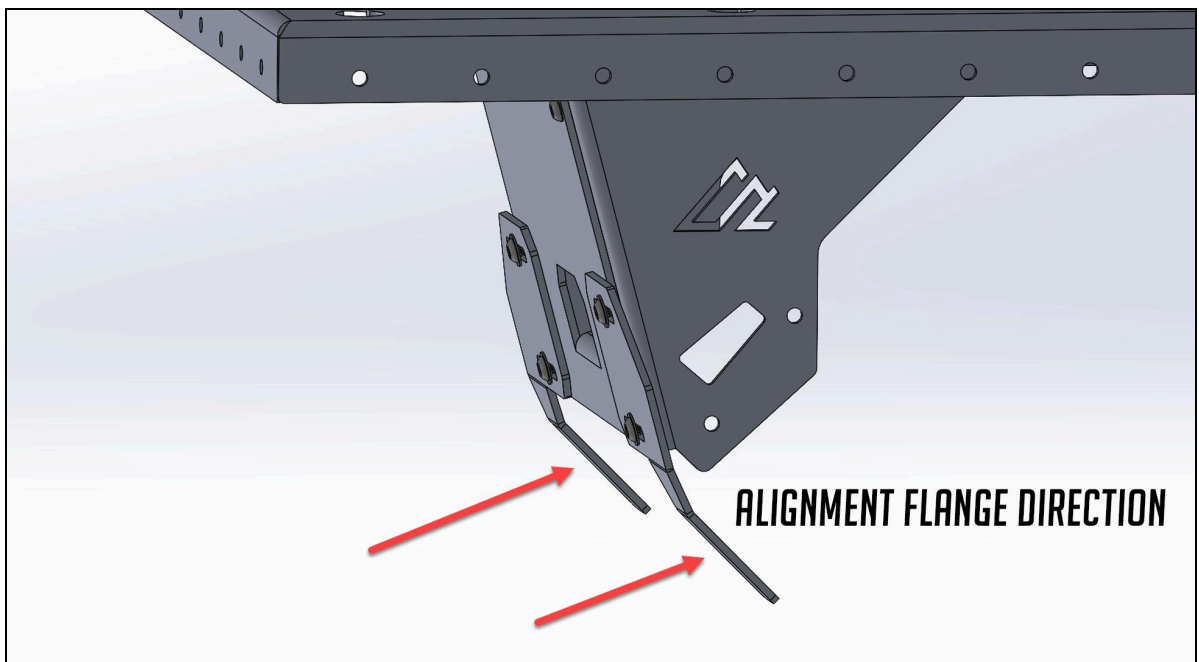


Step 2 - Install End Caps

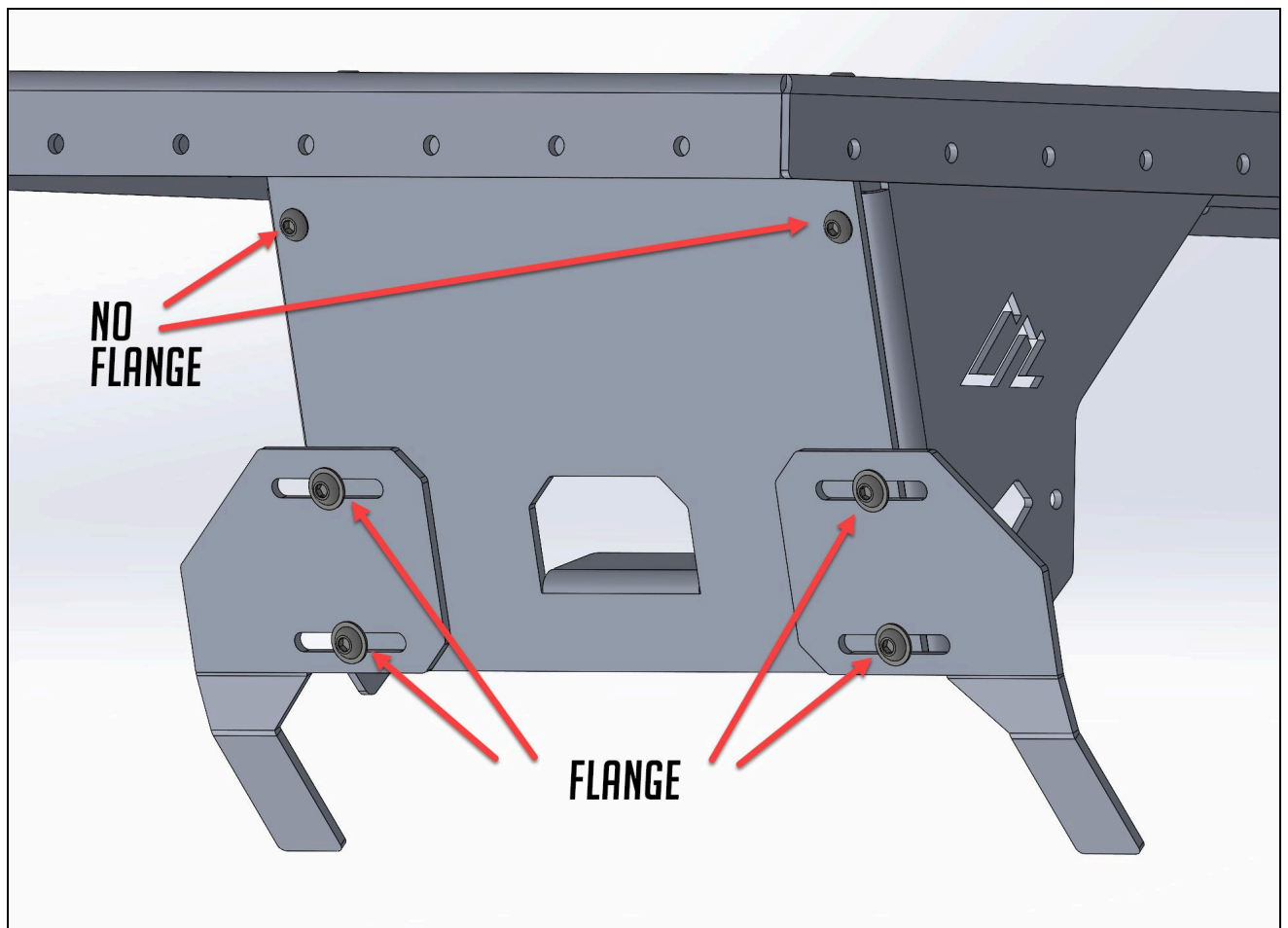
Position the end caps with the flange positioned to the inside as shown below. Use **(2) 6x14mm Button Head Bolts** and **(2) M6 Nylon Nuts** to secure each cap to the assembly using the two upper holes in each end cap. Remember to keep these bolts loose for now.



Then, using **(4) 6x20mm Flange Head Bolts** and **(4) M6 Nylon Nuts**, secure the alignment tabs to the end caps as shown below. Be careful to position the flanges on the alignment tabs as they are shown in the diagram below.

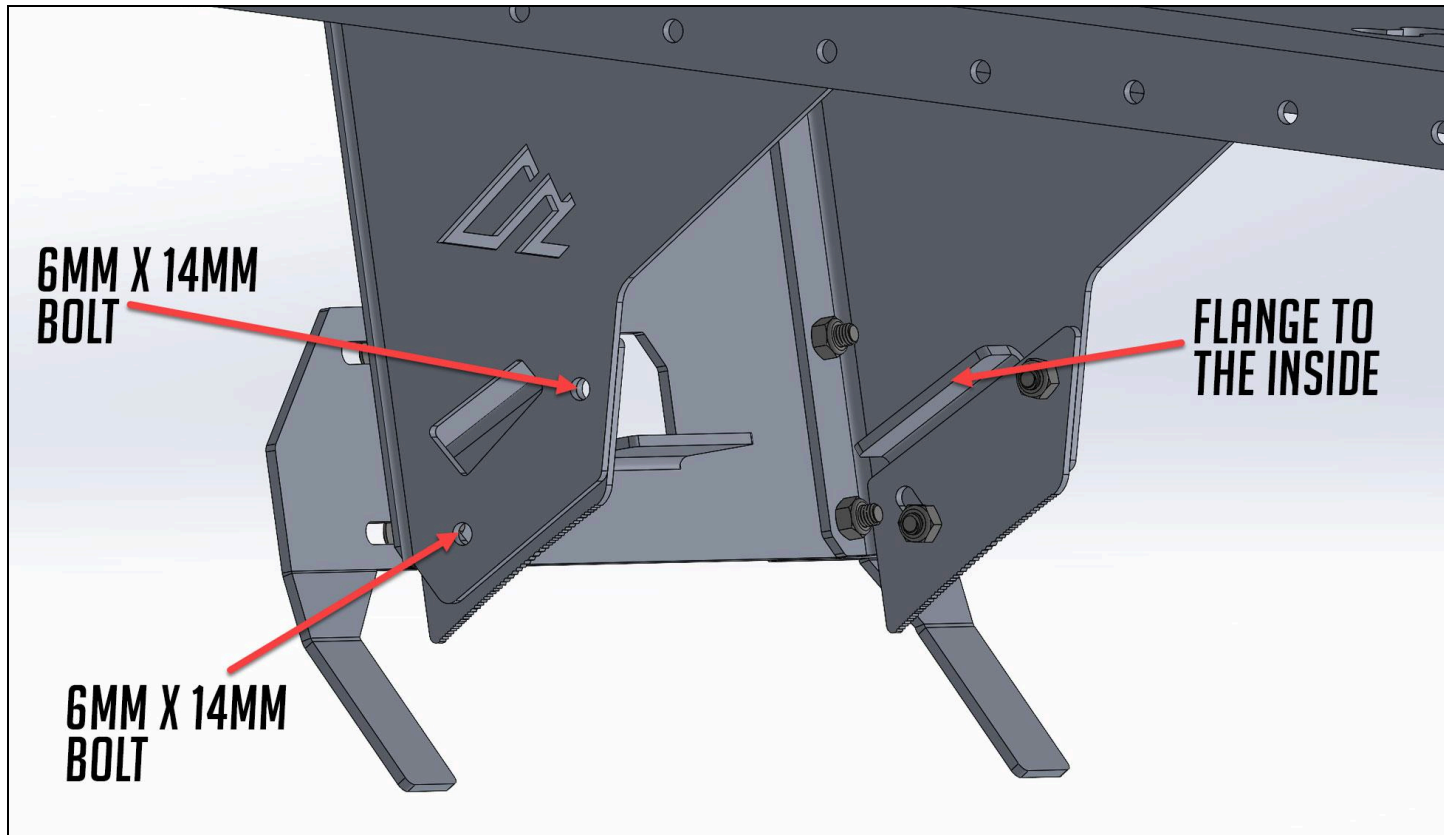


Insert the bolts as shown below.



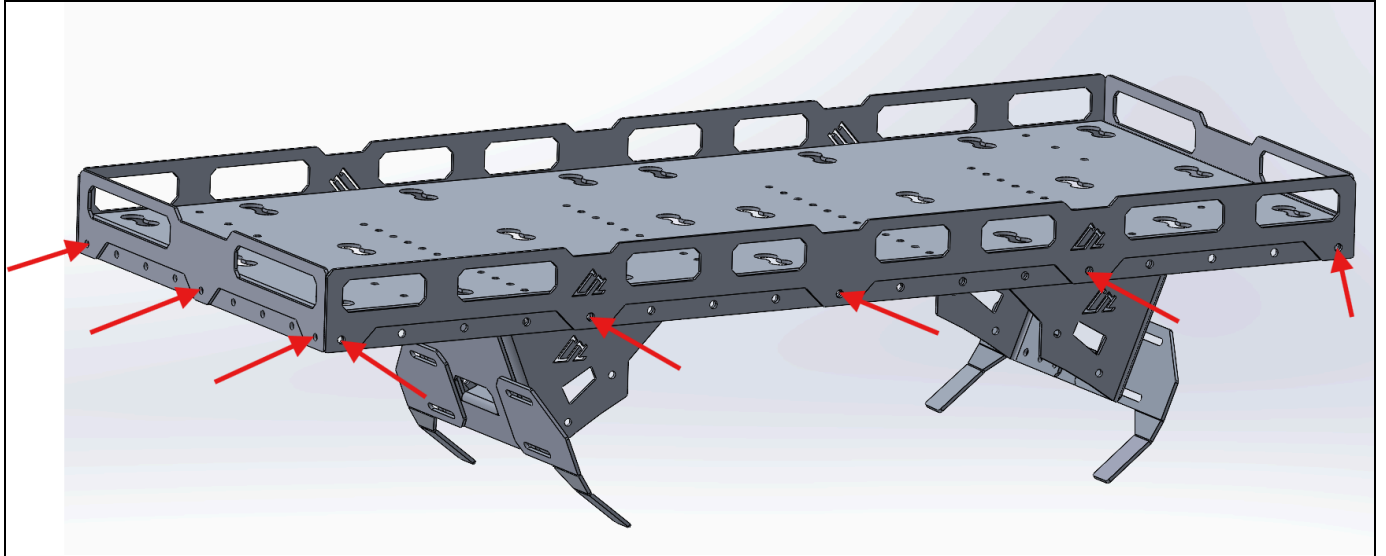
Step 3 - Install Adjustable Feet

Install the adjustable feet using **(2) 6x14mm Bolts** and **(2) M6 Nylon Nuts** for each foot as shown below. You have four feet. There are two different parts that are mirrors of each other. They should be installed so that the bottom of the foot aligns with the bottom of the vertical bracket and the flange bends to the inside, as shown below. Each foot will pivot to allow fitment to various tire sizes.



Step 4 - Install Edge Guards

Using **(16) 6x14mm Bolts** and **(16) M6 Nylon Nuts**, install the edge guards as shown below. These bolts can be fully tightened now.

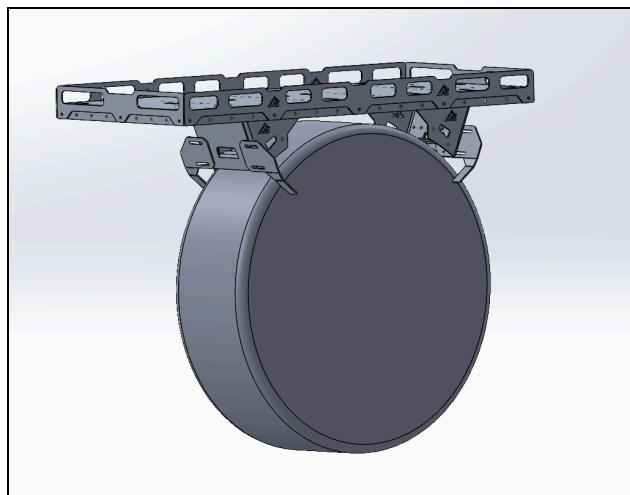


Step 5 - Tighten All (well, most) of the Bolts

Tighten all of the bolts except the (8) flange bolts and the bolts for the adjustable feet. These will be adjusted in an upcoming step.

Step 6 - Attach to the Tire

Notice the vertical brackets are not centered below the main platform. This allows you to choose whether you want the platform offset to the rear of the tire or the front of the tire. This will depend on your needs and the design of your tire carrier. Either way works well.

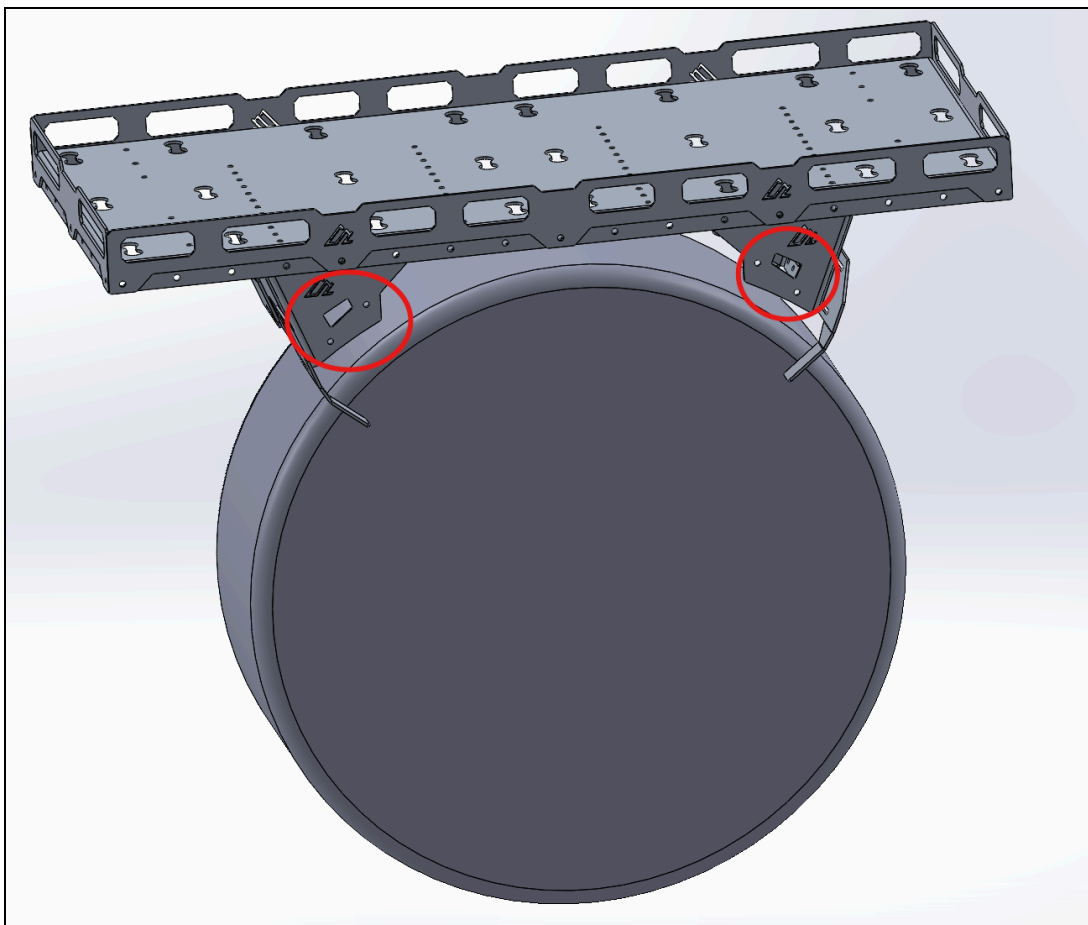


Center the vertical brackets on the tire (front to rear) and ensure that the main platform is level.

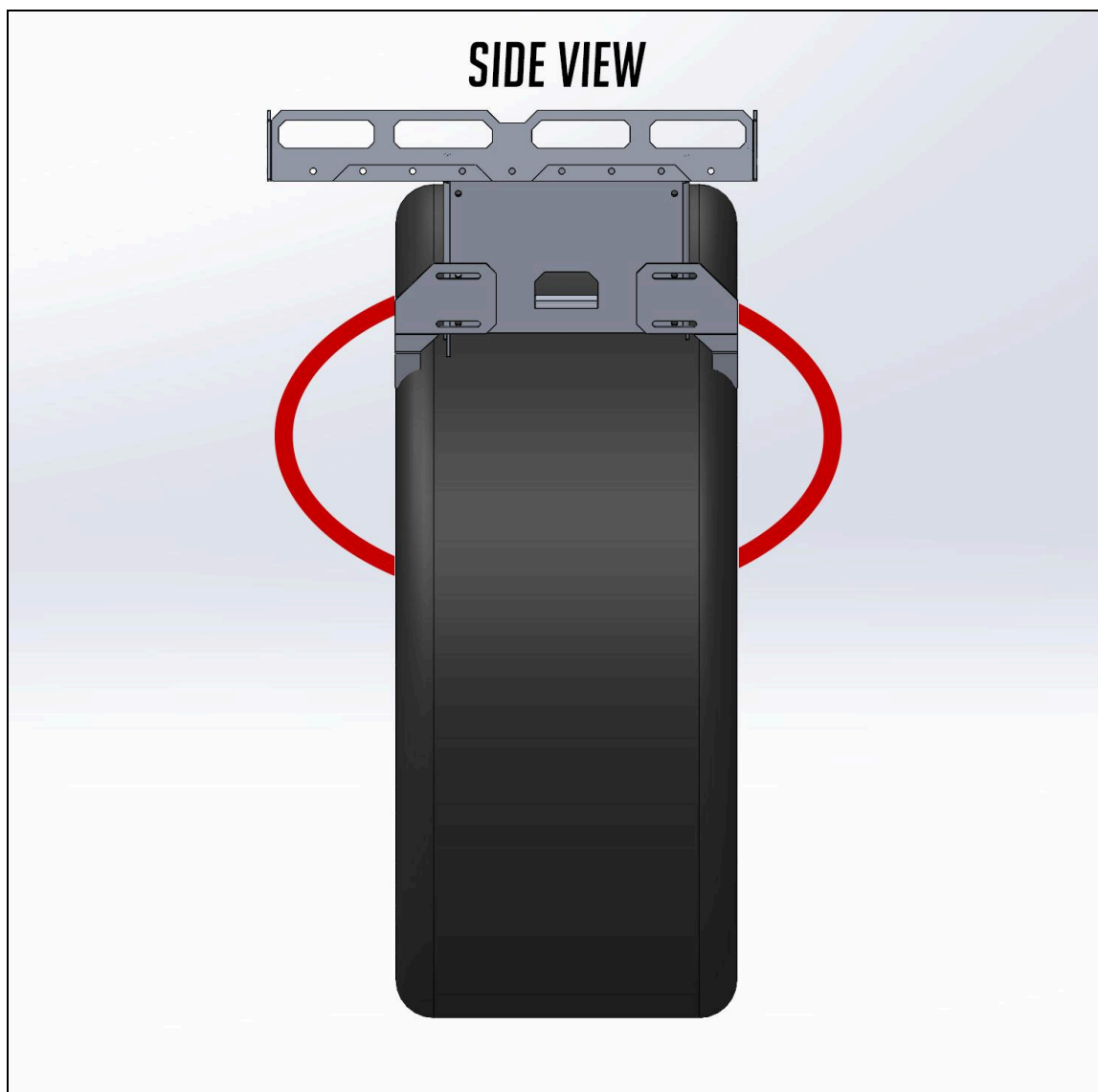
Then, adjust the feet and alignment tabs to ensure they are making solid contact with the tire.

Next, after checking for level and center alignment, tighten the bolts for the alignment tabs and adjustable feet.

Finally, secure the platform to the tire using ratchet straps. If you purchased our attachment strap kit (P/N MACS-1211), you can loop the strap through the slots in the platform (see arrows below), through the wheel, and finally back through the provided ratchet. Ensure that the strap goes through the strap slots to the front of the vehicle as well. Once both straps are connected, check for alignment and level once more and tighten the ratchets.



Ensure that the straps go all the way through the platform and then through the wheel. The red line below illustrates the path for the straps.



Step 7 - Trim and Tighten the Straps

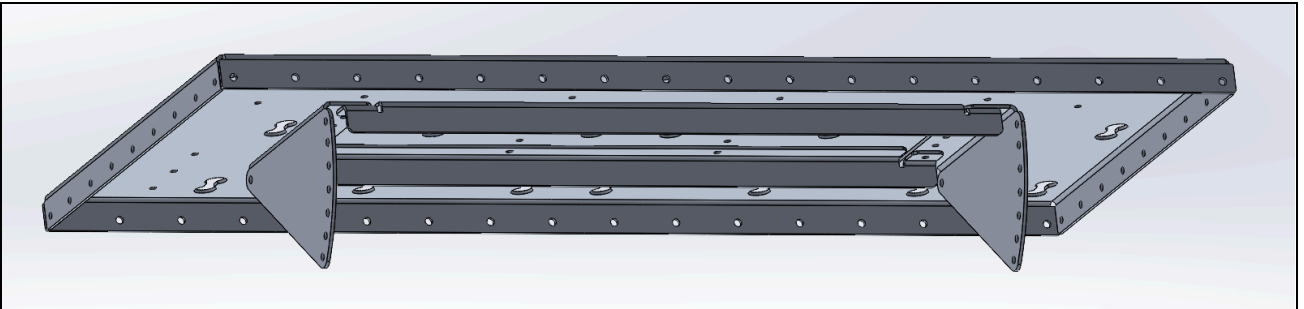
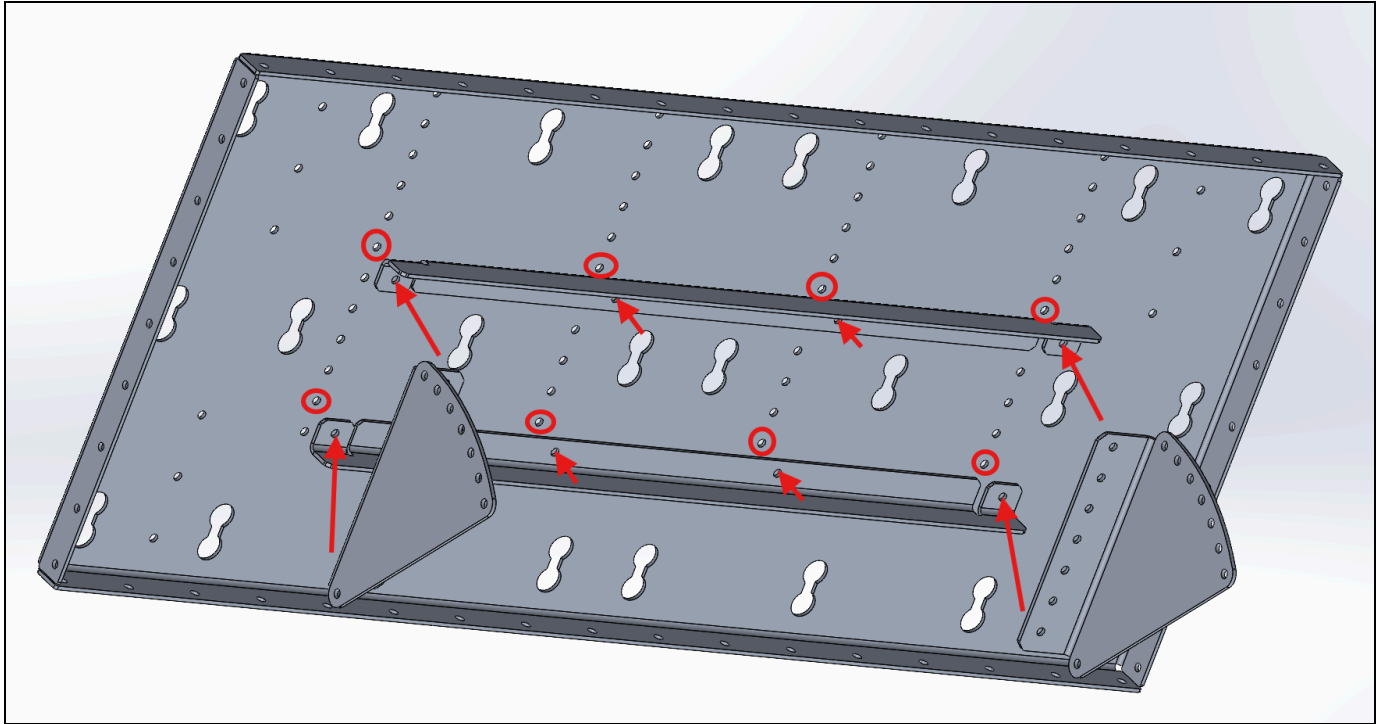
The last step is to fully tighten the straps. Depending on your tire size, you may be able to trim the straps and Cordura sleeves to prevent extra strap material from needing to be secured.

Before final tightening, if you purchased our strap kit, ensure that the Cordura sleeves are positioned anywhere the strap comes into contact with the wheel.

After a few miles, you should check the tightness of the straps again. It's possible for the platform to settle slightly into the tread, depending on your tires.

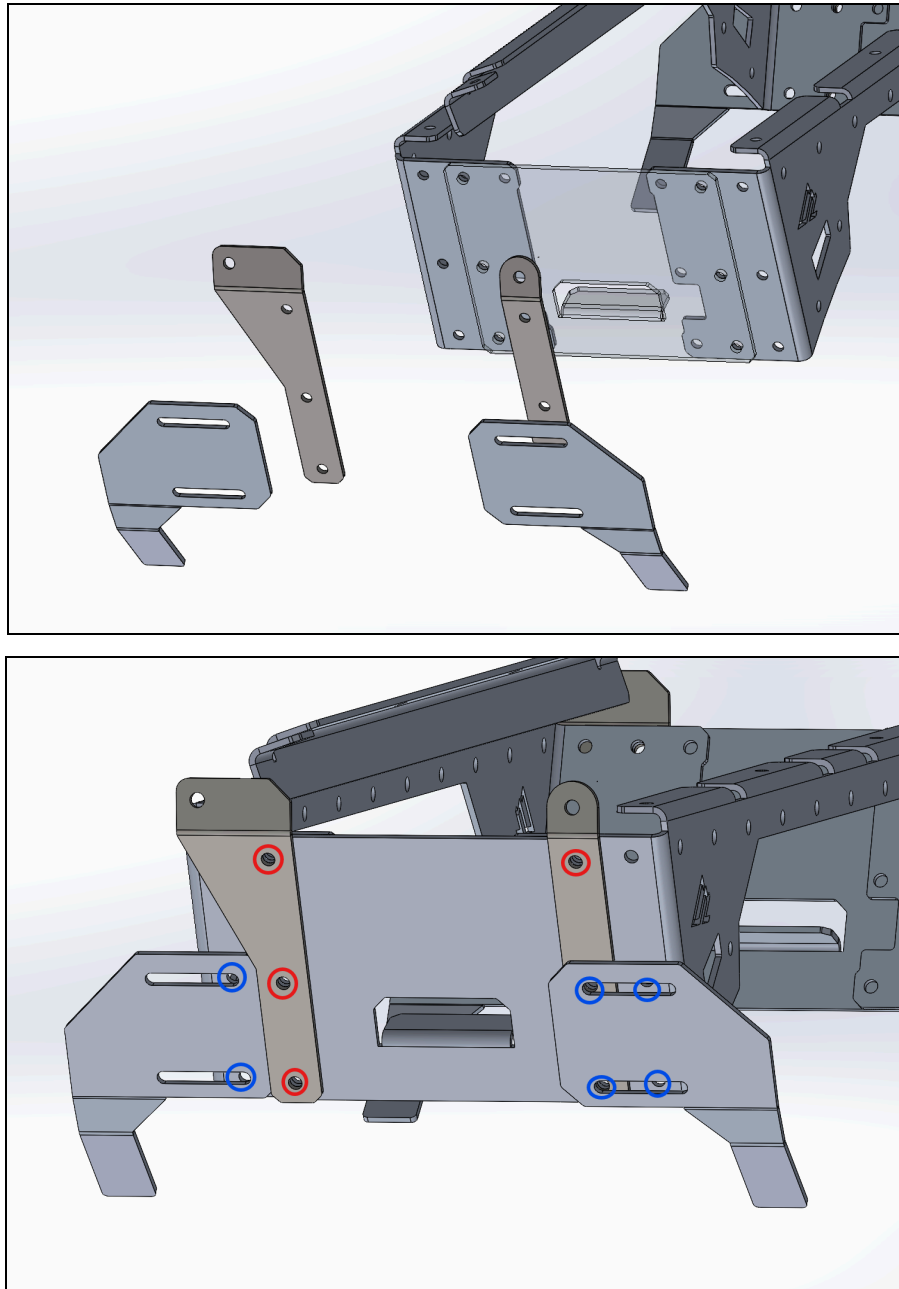
Camber Kit Installation - Step 1

If you have a Camber kit to adjust for an angled tire, first Install the **driver Pivot Bracket**, **Passenger Pivot Bracket** between the **(2) Braces** as shown below. Do so Using **(4) 6x14mm bolts** and **(4) M6 Nylon Nuts** per bracket

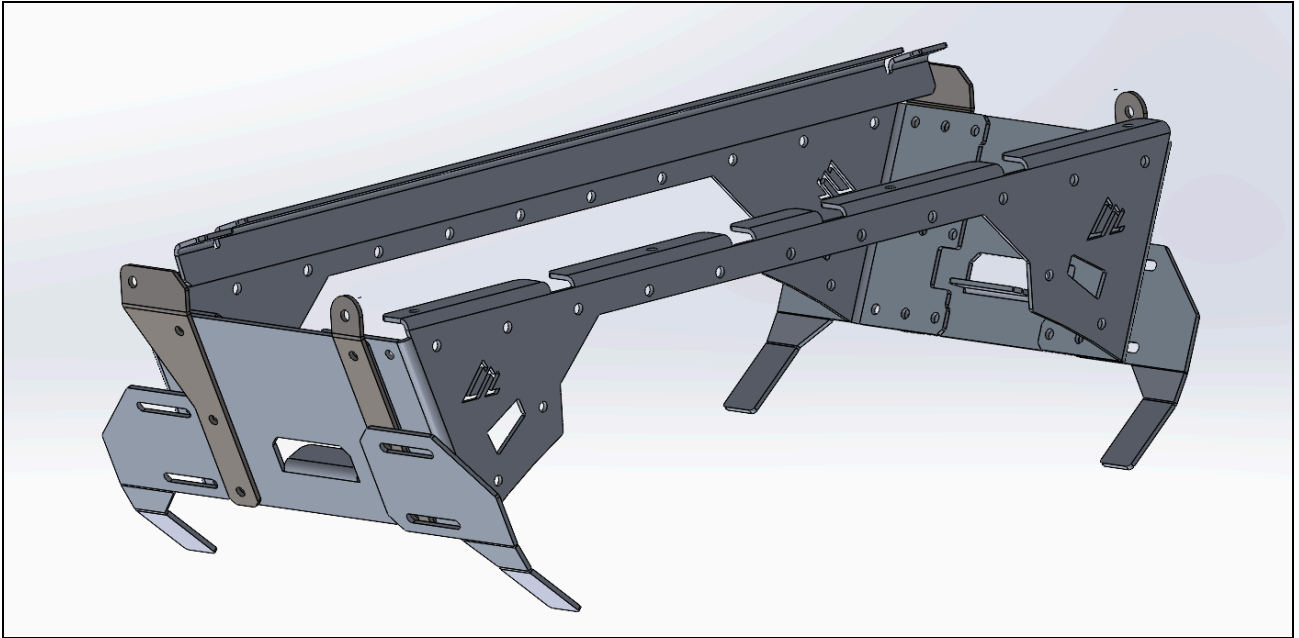


Camber Kit Installation - Step 2

The next step is quite intricate so pay close attention to the alignment. For this step align the following parts: **Front Pivot Bracket**, **Rear Pivot Bracket**, **Left Plate Lock**, **Right Plate Lock**, **End Cap**, and the two **Braces** exactly as shown below. Do so for both the **Passenger** and **Driver** side using **(4) M6x14mm Button Head Bolts** and **(6) M6x10mm Button Head Flange Bolts** per side



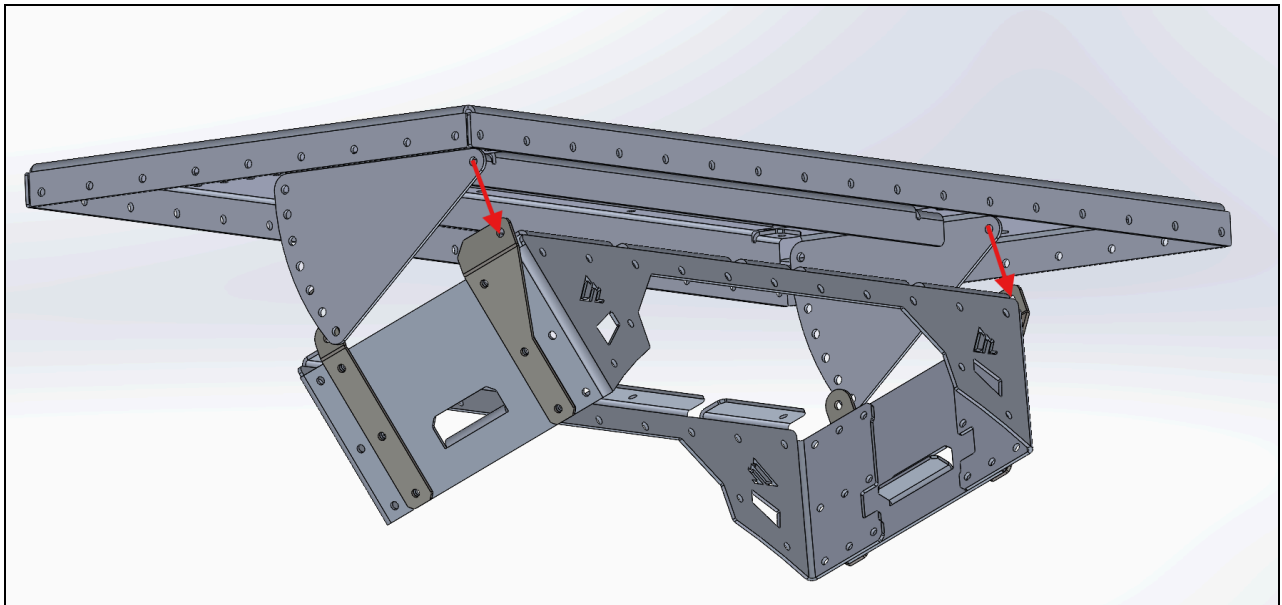
Once Attached, the assembly should look like this



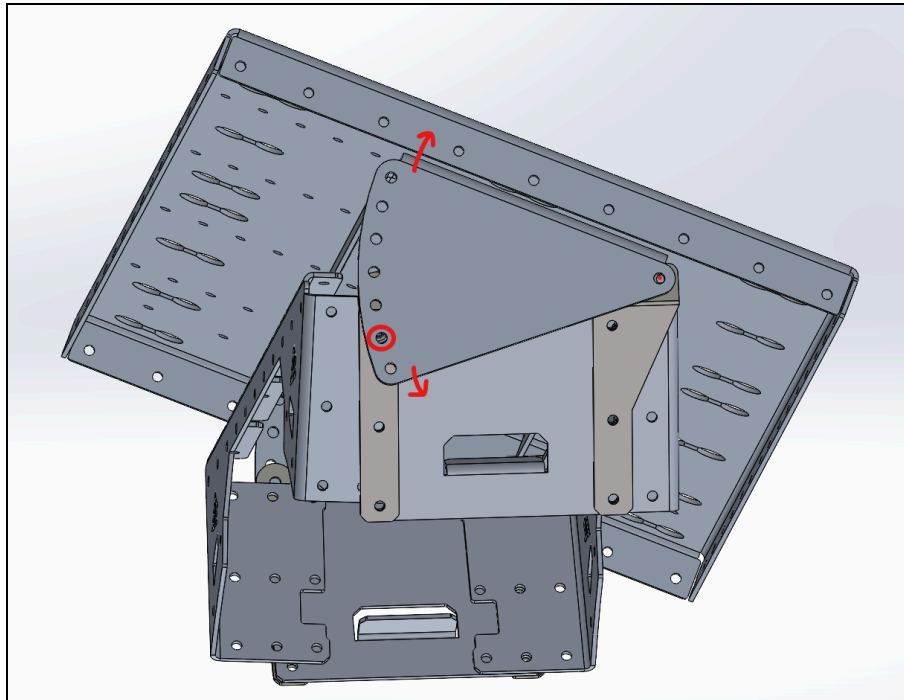
Camber Kit Installation - Step 3

Next we attach the **Front Pivot Bracket** to the front pivot point of the large **Pivot Bracket** on both the Driver and Passenger sides using **(1) M6x14mm Button Head Bolt** on each side (Secure this loosely)

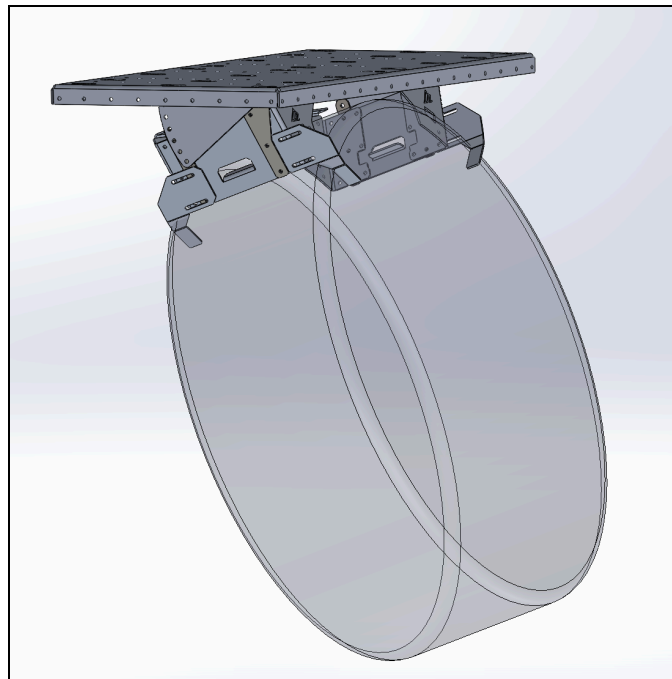
(Back View)



Once this pivot bolt is in place, adjust the angle and insert another **(1) M6x14mm Button Head Bolt** on each side through the rear pivot bracket once you find the pin height that results in the most level platform.

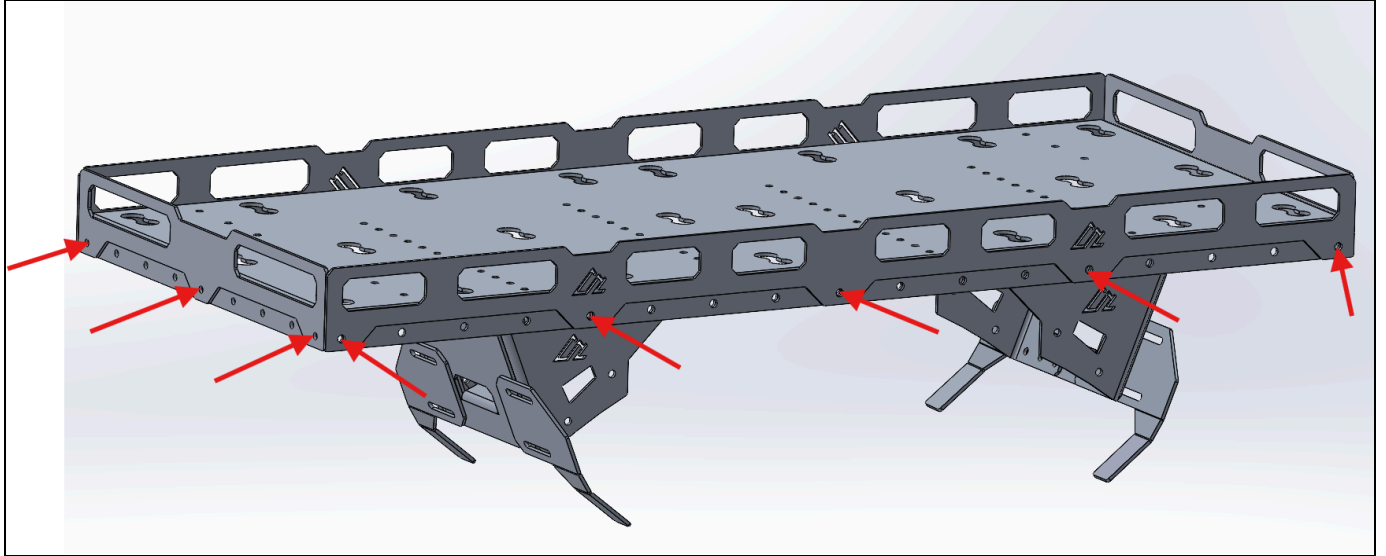


Once done, the bolts can be tightened and the platform should look like this facing the trunk

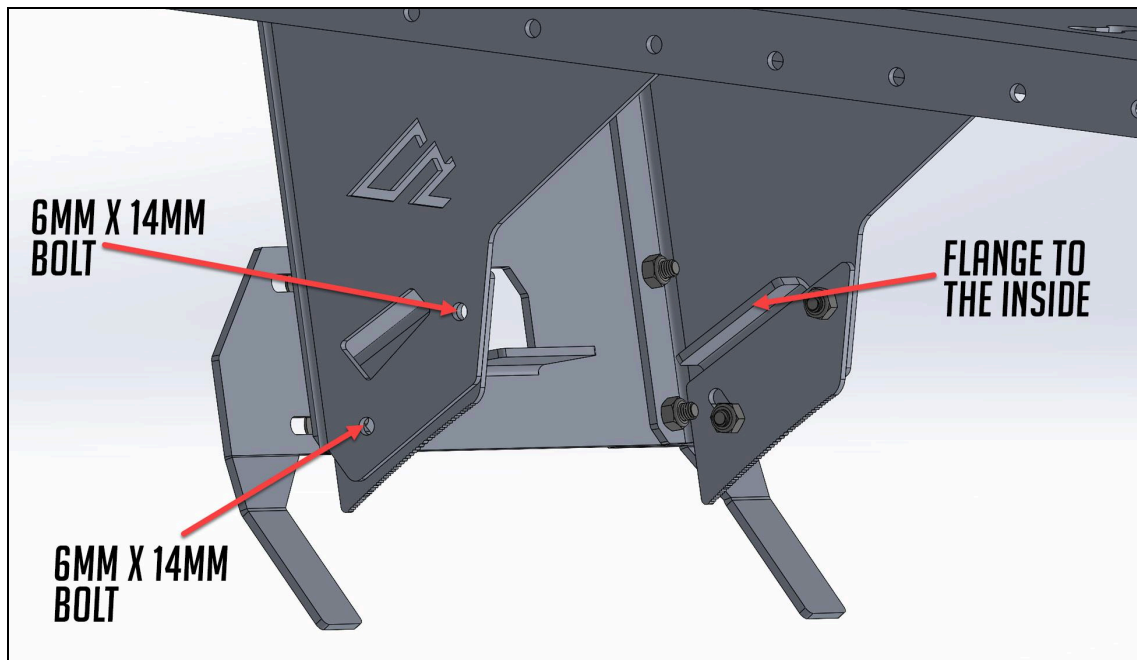


The final steps are to attach the guard edges and interior feet which are identical to the steps taken in the the conventional STP Mini Instillation

Using **(16) 6x14mm Bolts** and **(16) M6 locknuts**, install the edge guards as shown below. These bolts can be fully tightened now.



Install the adjustable feet using **(2) 6x14mm Bolts** and **(2) M6 Nylon Nuts** for each foot as shown below. You have four feet. There are two different parts that are mirrors of each other. They should be installed so that the bottom of the foot aligns with the bottom of the vertical bracket and the flange bends to the inside, as shown below. Each foot will pivot to allow fitment to various tire sizes.



Step 9: Share Your Photos

We take great pride in building our products and we hope that pride extends to you after installing your M.A.S.S. Spare Tire Platform Mini. If you are able to share your photos online (Facebook and Instagram), please tag **@AmericanAdventureLab** in the photo. We would love to see how it turned out and give you some reciprocal attention in return.

Congrats! You're all done!

Thank you!

At American Adventure Lab, we strive to improve anywhere we can. If you experience any issues with this product or have any suggestions, please let us know.

If you have any questions or concerns, please don't hesitate to reach out to us at 385.202.4188 or via email at Support@erp.Adventurelab.com.

